

DIRECTIONS FOR USING WRICO LETTERING GUIDES FOR SCRIBER LETTERING

Read carefully before using

Select the WRICO Lettering Guide for the size of characters required. The numbers in the upper right-hand corners of the guides indicates the size of character and whether the guide is for capitals, lower case letters, numerals, or capitals and numerals. For example:

- Guide No. G 100 CN — Capital and Numerals .100" in height
- Guide No. G 240 C — Capitals .240" in height
- Guide No. G 350 L — Lower case letters .350" in height
- Guide No. G 500 N — Numerals .500" in height

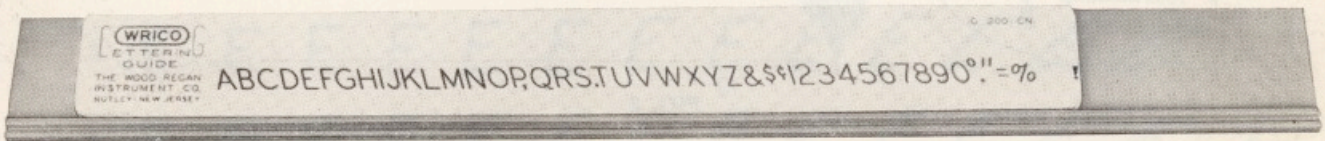


FIG. 1

Place the lettering guide on the guide holder, as shown in Fig. 1.

Place the guide holder in position where the lettering is to be done. The rubber and cork composition runners on the under side of the guide holder will prevent the guide holder from moving, leaving the left hand free to move the guide to right or left on the guide holder and the right hand free to operate the scriber.

Keep Surface of Guide Holder Clean

Before using the guide holder, the surface should be wiped with a cloth to remove any dust which might interfere with the smooth movement of the guide. If grit collects in the track in which the tail pin of the scriber slides, the track should be wiped with a cloth.

Adjustment

The chart shown in Figure 4 illustrates the characters made with each size lettering guide when the Scriber is adjusted for Standard Vertical Lettering. (Position 2-D as shown on Chart A). Other adjustments produce the various effects shown on Charts A and B.

To adjust the Scriber for any effect shown on Chart A loosen the knob (C) and place the tail pin of the Scriber in the hole in the upper right hand corner of the Scriber Adjuster and the plunger of the spring post in the slot indicated. To adjust the Scriber for any effect shown on Chart B place the tail pin of the Scriber in the hole in the upper left hand corner of the Adjuster and the plunger of the spring post in the slot indicated. The position of the Scriber for the effects shown on Chart B is indicated on the Adjuster in RED. For these effects the lettering is done below instead of above the guide.

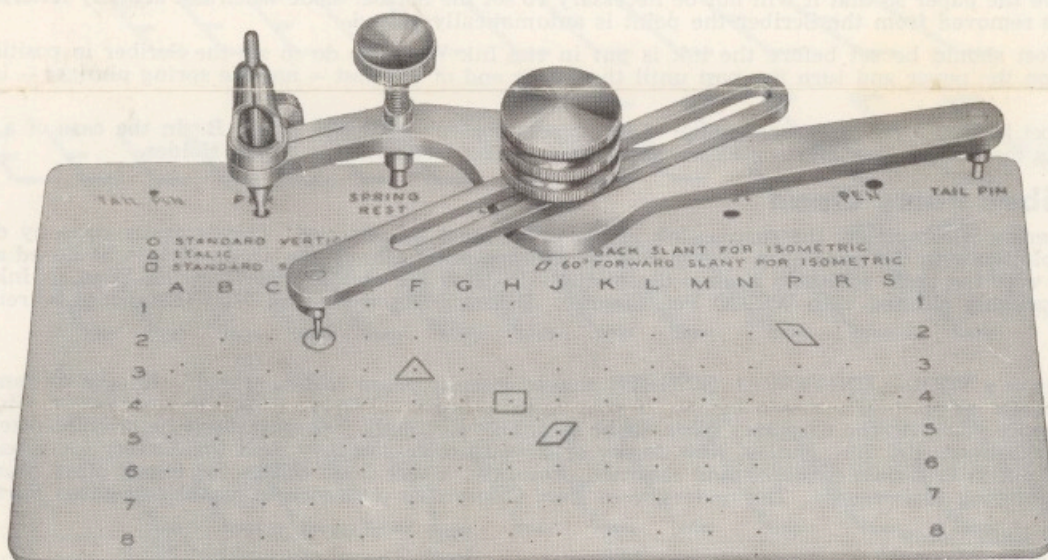


FIG. 2

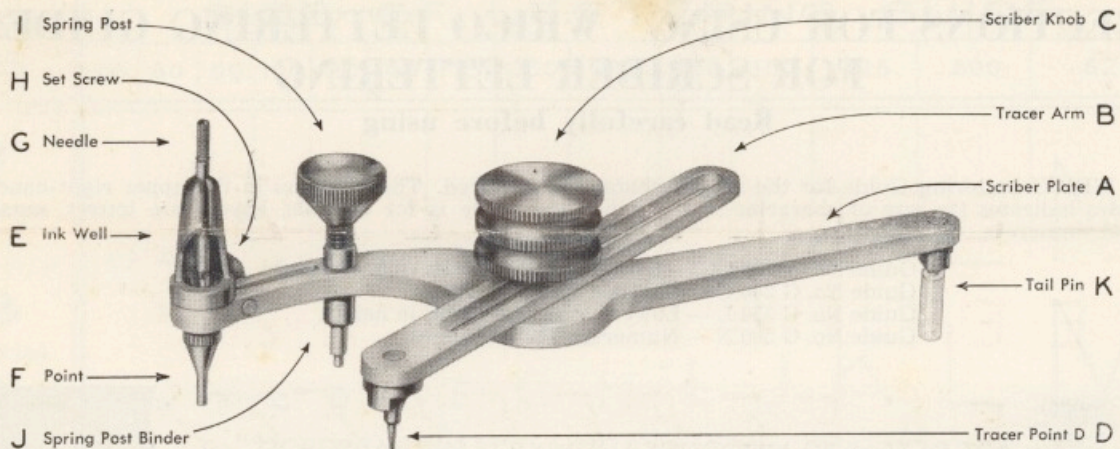


FIG. 3

Select the point giving the desired width of line. (See Fig. 4) and screw the point (F) in the underside of the Ink Well. Select the correct needle (G) for the point to be used and insert the needle in the opening in the top of the Ink Well (E).

- Needle No. 3A (Green Top) — Fits Points Nos. 43, 55, 67, 83 and 98
- Needle No. 6A (Black Top) — Fits Points Nos. 21, 26 and 35
- Needle No. 7A (Red Top) — Fits Points Nos. 13 and 17
- Needle No. 9A (White Top) — Fits Point No. 9

Place one drop of ink in the Ink Well (E) and move the needle up and down several times to start the flow of ink. When lettering on a coarse or rough surface a free flow of ink is desirable. When lettering on a smooth surface a drier line is required. The flow of ink is regulated by raising or lowering the needle. The slot in the top of the ink well provides spring tension which holds the needle in any desired position. If the tension becomes weak press the top together with the fingers.

Place the tail pin in the groove in the guide holder and the tracer point in the desired character engraved on the lettering guide. The nylon sleeve on Part K should not be removed. It causes the tail pin to slide smoothly in the Guide Holder Track.

With the point (F) tilted above the surface of the paper, slide both guide and scriber until the character is in the proper position. Lower the point (F) to the surface and letter the character by following the engraved character on the lettering guide with the tracer point. Because the tracer point and the pen point do not move in the same direction, it is advisable to watch the TRACER POINT while lettering.

The Spring Post

The Spring Post "I" serves two purposes — To prevent the application of too much pressure on the point and to raise the point above the paper so that it will not be necessary to set the Scriber aside when not actually lettering. As soon as the hand is removed from the Scriber the point is automatically raised.

The Spring Post should be set before the ink is put in the Ink Well. To do so set the Scriber in position with the point resting on the paper and turn the post until the lower end of the post — not the spring plunger — is flush with the paper.

The Spring Post is used for a large percentage of the effects shown on Charts A and B. In the case of a few of the extreme effects the Spring Post must be raised as it comes in contact with the Guide Holder.

Keep Scriber Parts Clean

When the lettering is completed, the surplus ink in the point must be removed. This is easily done by drawing the point over a blotter with the needle up. When the ink is apparently all out, the needle should be raised and lowered once or twice with the point still held against the blotter. If dried ink should collect in the Point or Ink Well they should be thoroughly cleaned with WRICO Pen Cleaner. Before doing so the Ink Well (E) should be removed.

Repairs

With proper care a WRICO UNIVERSAL SCRIBER should last for years without repair. In case of damage, repair parts are available at the prices shown below. If your Scriber needs repairing take it to your dealer. He will either repair it or supply you with the necessary parts. If he is unable to supply you, parts may be ordered direct from the Wood-Regan Instrument Co., Inc., Nutley, New Jersey or if you prefer you may send the Scriber for repair in which case it will be put in first class condition and returned promptly. There is no charge for repair other than the prices of the parts requiring replacement. The underside of Part C serves as a wrench to loosen or tighten Parts D and K.

Part A — with Part J only	2.25	Part F — No. 9 only	1.30
Part B without Part D or D1	1.00	Part G — all sizes except No. 945
Part C75	Part G — No. 9A only70
Part D or Part D165	Part H30
Part E	1.30	Part I	1.60
Part F — all sizes except No. 9	1.00	Part K with Nylon sleeve40

	A	B	C	D	E	F	G	H	J	K	L	M	N	
1				E	E	E	E	E						1
2		E	E	E	E	E	E	E	E	E	E	E	E	2
3	E	E	E	E	E	E	E	E	E	E	E	E	E	3
4	E	E	E	E	E	E	E	E	E	E	E	E	E	4
5	E	E	E	E	E	E	E	E	E	E	E	E	E	5
6	E	E	E	E	E	E	E	E	E	E	E	E	E	6
7		E	E	E	E	E	E	E	E	E	E	E	E	7
8			E	E	E	E	E	E	E	E	E	E	E	8

CHART A

	S	R	P	N	M	L	K	J	H	G	F	E	D	C	
6				E	E	E	E	E	E	E	E	E	E	E	6
5			E	E	E	E	E	E	E	E	E	E	E	E	5
4	E	E	E	E	E	E	E	E	E	E	E	E	E	E	4
3			E	E	E	E	E	E	E	E	E	E	E	E	3
2				E	E	E	E	E	E	E	E	E	E	E	2

CHART B

POINT SIZE	SIZE OF LETTERING GUIDE													
	60	80	90	100	120	140	175	200	240	290	350	425	500	625
9 Width of line .009"														
13 Width of line .013"	A	A	B	C	D	E	F	G	H	I	J	K	L	M
17 Width of line .017"														
21 Width of line .021"														
26 Width of line .026"														
35 Width of line .035"														
43 Width of line .043"														
55 Width of line .055"														
67 Width of line .067"														
83 Width of line .083"														
98 Width of line .098"														

Angle 5

FIG. 4